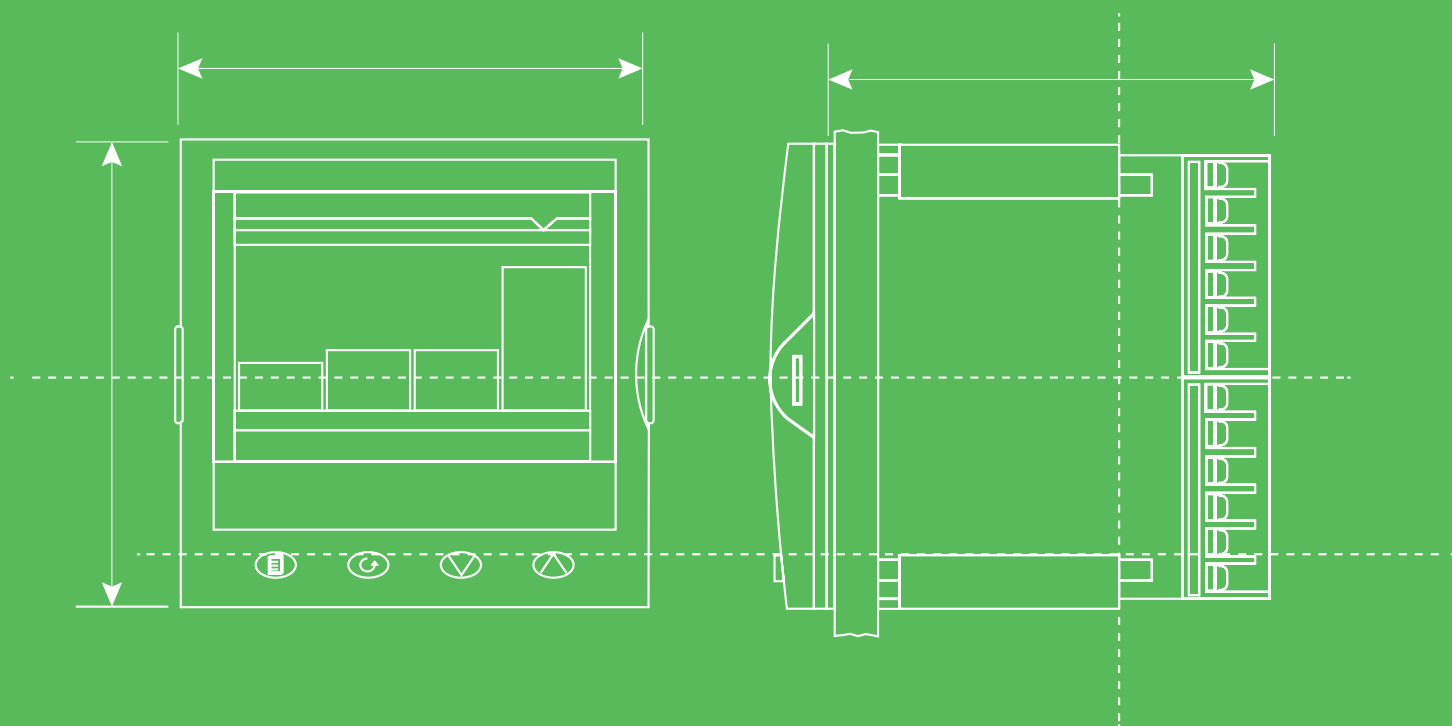


PROCESS CONTROL, RECORDING AND AUTOMATION



Authorized
Solution Provider

Eurotherm™
by Schneider Electric



ABOUT ADM

FOR OVER 30 YEARS, ADM INSTRUMENT ENGINEERING HAS BUILT A SOLID REPUTATION ACROSS AUSTRALIA AS A RELIABLE SUPPLIER OF POWER, TEST EQUIPMENT, INDUSTRIAL SENSORS AND TRANSDUCERS.

Offering an extensive range, we are a proudly Australian owned ISO9001 company with a strong tradition in providing design solutions, expert advice and excellent customer service.

We can provide a solution for almost any application.

ADM NOW OFFERS THE FULL RANGE OF EURO THERM PROCESS CONTROL, RECORDING AND AUTOMATION SOLUTIONS AND STOCKS THE MOST COMMONLY USED PRODUCTS.

INDEX

03 ABOUT EURO THERM

04 FOUNDATION CONTROLLERS

05 EPC3000 ADVANCE PROCESS CONTROLLERS

06 EURO THERM PROCESS AUTOMATION

07 EURO THERM RECORDERS

09 EPC2000 'BLIND' PROCESS CONTROLLER AND EURO THERM HMI GP4114 FROM PROFACE

10 EURO THERM THYRISTORS & POWER CONTROLLERS

11 EPOWER CONTROLLERS

12 OUR SUPPLIERS

Authorized Solution Provider

Eurotherm™

by **Schneider Electric**



ABOUT EUROTHERM

Eurotherm was formed in June 1965

and has decades of experience in providing world-class process control, recording and automation solutions.

At the heart of Eurotherm's success is a continuous research and development programme, ensuring that Eurotherm solutions meet the modern challenges faced across a wide range of industries, including those in Australia.

Australian Eurotherm customers will be fully supported by ADM's local sales and service team of highly qualified engineering personnel, who understand the wide range of applications and industries in this country.

EUROTHERM PRODUCT RANGE

- Process Controllers
- Process Automation Solutions
- Recorders
- Thyristors / Power Controllers
- Related products include:
 - *Zelio Solid State Relays*
 - *Action Instrument Signal Isolators*
 - *Automation Software*

PROCESS CONTROLLERS

Eurotherm offers both multi-loop and single-loop process controllers.

Multi-loop controllers are used to control a process, which needs more than one control loop within a system. The range of advanced features and options found on the Eurotherm multi-loop controllers makes them ideal for small machine control.

These include flexible I/O options to control and measure a multitude of processes including, but not limited to temperature, humidity, carbon potential, flow, pressure, level, viscosity and additive dosing. Using a multi-loop controller over single-loop device can save installation time and costs by giving one common connection point with less wiring and panel cut outs.

Downtime can also be reduced with rack mount multi-loop controllers, where modules can be changed without powering down the system.

PROCESS AUTOMATION SOLUTIONS

Eurotherm is a world leader in analogue control solutions. Eurotherm's built-in functionality reflects Eurotherm's core technology and application expertise, which reduces engineering effort and provides systems that are delivered on time and work first time.

Control, advanced data security, energy management, and flexible I/O, together with visualisation options are combined with powerful strategy engines to form the basis of systems, which can easily integrate with existing platforms and 3rd party equipment.

ACTION INSTRUMENTS

The Action Instruments brand provides signal conditioning and isolation, and alarm trips for industry of the highest quality. Action Instruments defined the standard for accuracy and reliability and its focus is on technological innovation.

RECORDERS

Eurotherm's state-of-the-art recorders and data management software ensures that your critical process data is kept safe.

They also optimise operational efficiency, by converting data into the information required to add value to a process.

Eurotherm offers some of the best, proven recording and archiving solutions and Eurotherm recorders feature a wealth of functions, including batch, audit trail, electronic signatures and remote viewing/operation.

THYRISTORS / POWER CONTROLLERS

Eurotherm's impressive range of thyristors and power controllers improve process performance and save on energy costs.

Covering all types of load and voltage, these products offer reliability and features such as high-performance alarm strategies and advanced diagnostic load fault detection.

Eurotherm SCR Power Controllers are suitable for multiple applications, whether the load is constant or variable resistance, inductive or transformer coupled, single, or three-phase.

ZELIO SOLID STATE RELAYS

Solid State Relays have been the standard in switching technology since the early 70's. This is due to their high switching frequency, resistance to shock and vibration and superior lifetime.

Complete quiet switching is highly beneficial in medical applications, environmental controls or other areas where quiet operation is desirable.

Zero-crossing control also means low electrical noise when used near computers, PLC™s, SCADA systems, or other factory automation control systems.

FOUNDATION CONTROLLERS

3200 SERIES FIXED BUILD TEMPERATURE CONTROLLERS

The innovative range of 3200 controllers offer precision control of temperature and other process variables, together with many advanced features not usually found in this class of controller.



The emphasis of the 3200 is on ease of use.

A simple 'Quick Start' code is used to configure all the functions essential for controlling your process.

The code includes input sensor type, measurement range, control options, and alarms, making 'Out the Box' operation truly achievable.

In operator mode, every parameter has a scrolling text message describing its function.

More advanced features are configured using Eurotherm iTools, a PC based configuration wizard, which is an easy to use and instructive guide to all the functions in the controller.

Features / Functions

- 8 Segment programmer
- Heater failure detection
- Current monitoring
- Internal timers
- Scrolling text messages
- Recipes
- Modbus communications
- Modbus SP retransmission
- Analogue retransmission
- Remote setpoint
- Help text
- Wizard set-up via iTools
- Custom messages via Tools
- USB configuration clip ready
- 4 alarms with "OR" to relays

3500 SERIES DUAL LOOP CONTROLLER/ PROGRAMMER

This advanced process controller provides precision control of temperature and a host of other process variables, together with an abundance of advanced options making it the most adaptable product in its class.



The emphasis of the 3500 controller is flexibility, whilst maintaining ease of use.

Advanced features are configured using a PC based graphical configuration tool enabling users to pick function blocks from a library then connect them together using soft wiring.

The large 5-digit display provides a clear and unambiguous indication of the process value.

A four-line message centre provides custom or standard views of important information to the user, while vertical and horizontal bar graphs provide at a glance visual indication of the process.

Features / Functions

- 2 PID loops
- 50 Programs
- Precision PV input
- Carbon potential
- Wet/Dry Humidity
- Maths/logic/timers
- Graphical Wiring via iTools
- Custom user interface
- Recipes
- Digital communications
 - Profibus DP network
 - DeviceNet® network
 - Modbus RTU Master/Slave
 - Ethernet Modbus TCP, Master/Slave
 - Operate two different protocols concurrently
- OEM Security

26/2704 ADVANCED PROCESS CONTROLLER / PROGRAMMER

These are highly accurate and stable process controllers available in a single, dual or triple loop format. Features include setpoint programming and comprehensive selection of maths and logic functions.



The 2604 has a dual 5-digit display of process value and setpoint with an LCD panel for display of alarm messages, programmer and loop status information.

User defined messages in the LCD panel simplify operation.

The 2704's user interface incorporates a bright dot matrix display, providing extreme flexibility and ease of use.

Both the 2604 and 2704 are highly configurable products offering many features previously found only in programmable logic controllers.

This enables systems to be implemented integrating the process control and logic functions of a machine, therefore simplifying system complexity and reducing the total system costs.

Control Functions

- 3 Control loops
- PID, VP or ON/OFF
- Cascade, ratio or override
- Carbon potential
- Wet/Dry Humidity
- Gain scheduling
- Configurable control strategies

Setpoint Programmer

- 60 Programs
- 3 Profiled setpoints program
- 600 Segments
- 16 Event outputs
- Program mimic display

Digital Communications

Profibus DP, DeviceNet®, Modbus RTU, Ethernet Modbus TCP

EPC3000 ADVANCE PROCESS CONTROLLERS

EPC3016 FIXED BUILD 1/16 DIN FORM

The EPC3000 range of programmable single loop process and temperature controllers maximise process efficiency and are certified for cybersecurity communications robustness.



These controllers combine industry leading control and measurement performance with simplicity of use, and they are also highly flexible.

A simple “Quick Start” configuration code, enables fast “Out of the Box” commissioning using just the instrument HMI.

For applications requiring additional processing, user function block wiring provides a full range of math, logic, totalizer and specialised functions.

A highly visible three-colour display, with natural language status and alarm indications is easy for operators to use.

EPC3000 is highly durable, with a battery-free design and extended service life.

Features / Functions

- Precision furnace control
- Atmosphere control
- Industrial ovens
- Crystal growing
- Composite materials processing
- Heat exchangers
- Automotive paint drying
- Baking ovens

EPC008 FIXED BUILD 1/8 DIN FORM

Fast and accurate process inputs, with exceptional thermal stability, delivering precise and consistent control over prolonged periods without calibration drift.



Recalibration and user calibration correction functions further improve accuracy.

Eurotherm’s industry leading PID algorithm delivers fast reacting and repeatable control and has been enhanced to further reduce overshoot.

Rapid rise to operating temperature and low oscillation aids high process throughput at low scrap rates.

Different PID settings may be applied in different process operating regions for optimum performance.

Features / Functions

- Precision single loop controller with cybersecurity function
- Precise (0.1%) universal inputs with 50ms sample rate
- Thermocouples, resistance thermometer, mA, mV, volts, zirconia
- Exceptional thermal stability
- Fast PID response with minimal overshoot and oscillation
- Multi-programmer function with up to 10 programs of 24 steps
- Standard 50 configuration wires

EPC3004 FIXED BUILD 1/4 DIN FORM

Ethernet enabled and certified to meet the stringent cybersecurity requirements of Achilles® Communications Robustness Testing Level 1.



Ethernet communications are supported via a standard RJ45 connector, providing fast access to process and diagnostic information, as well as connectivity to external PLC or plant SCADA.

Ethernet/IP, BACnet and Modbus RTU serial communications are also supported.

iTools Engineering Studio is free PC based backup and configuration software that uses a USB connected tool, powering the instrument from the USB interface for convenient desktop configuration.

Features / Functions

- High visibility customisable display
- Quick code setup with application templates
- User function block wiring including math, logic and totalizer
- Extensive range of international approvals
- Direct Ethernet RJ45 Connection certified to Achilles® CRT Level 1
- Individual setpoint ramp up and setpoint ramp down limits
- Individual output power ramp up and output power ramp down limits
- Configurable “Safe” power up

HELPING DELIVER AN EFFICIENT AND SECURE PROCESS

EUROTHERM EPC3000 PROGRAMMABLE CONTROLLERS

Maintain the high standards of production quality and ease your cybersecurity worries



EUROTHERM PROCESS AUTOMATION

Eurotherm DCS solutions utilise the expertise on which Eurotherm has built over 40 years of research and development.

World class control, advanced data security, energy management, flexible I/O and visualisation options combined with powerful strategy engines form the basis of systems that can easily integrate with existing platforms and 3rd party equipment as required.

Eurotherm's products are designed with built-in functionality that reflects our core technology and application expertise - reducing engineering effort and providing you with systems that are delivered on time and work first time.

T2750 PROGRAMMABLE AUTOMATION CONTROLLER

The T2750 PAC's Enhanced Processor is Eurotherm's highest performance solution, offering extremely cost-effective redundancy options, making high-level process control an affordable option.



- Built-in redundancy that doesn't require expensive engineering.
- Versatile HMI visualisation solutions.
- Point of measurement, secure, redundant data recording.
- Powerful strategy engines.
- Proven control algorithms already packaged and implemented.
- Secure data recording
- Embedded technologies to meet requirements such as FDA 21 CFR Part 11 and AMS2750E without additional engineering.

The control unit and I/O system form the basis of a complete distributed control and recording environment, which is capable of continuous analogue, logic and sequential control combined with secure data recording at point of measurement.

This is designed to enhance the Return on Investment (ROI) from your process, by maximising process uptime and minimising engineering costs.

The E-Sync technology lowers engineering costs, shortens implementation time and simplifies lifetime maintenance.

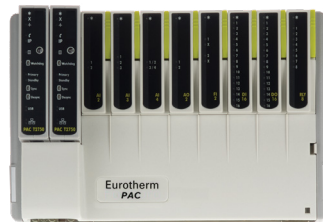
The T2750's duplex mode offers redundancy of processors, power supply and network at a price performance level that has never been seen before.

T2750 provides secure and redundant data recording at point of measurement simply by plugging in the additional processor module.

The data is held in non-volatile memory and is in a secure format to inhibit tampering. For valuable data this is the most simple and powerful offering in the marketplace.

T2750 PROGRAMMABLE AUTOMATION CONTROLLER

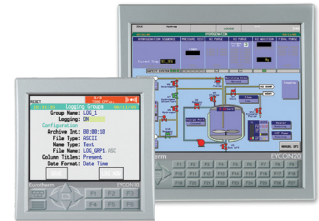
The T2750 PAC hardware provides high-performance control with an enhanced processor.



Additional high specification modules make it the most powerful of all Eurotherm's automation and control instrumentation.

EYCON10 / EYCON20 VISUAL SUPERVISOR

The Eycon™ Series combines Multi-Function Control, Recording, and Visualisation, in a Single Process Management Unit.



This brings expertise in control, data acquisition and process automation into a single process management unit.

The Eycon 5.5" ¼ VGA or 12.1" XGA offer integrated colour, TFT displays capable of performing continuous, sequential and logic control in a slim panel mount enclosure.

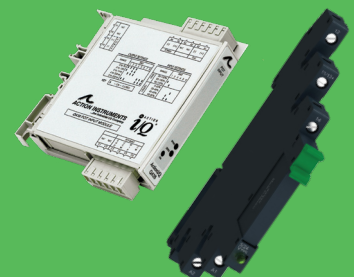
This advanced array of features effectively makes the Eycon visual supervisor a mini DCS, with the efficiency and economy of integration into a single unit and the flexibility to be a powerful component of a wider system.

Eycon Visual Supervisor instruments can be utilised as a building block within a larger system to provide peer-to-peer communications over Ethernet (ELIN), reducing engineering costs with increased availability of the system.

The versatility of Eurotherm Process Automation components makes them ideal for a wide range of applications - as diverse as pharmaceutical / chemical reactors, glass furnaces, multi-zone heat treatment furnaces, injection molding and extrusion systems, batch control systems, environment monitoring, and building management systems.

DIN-RAIL MOUNTED SIGNAL CONDITIONING & SOLID STATE RELAY SOLUTIONS

Expand your PLC capabilities with these easy to integrate products from Schneider Electric Eurotherm. Talk to ADM's Engineering staff for more information.



EUROTHERM RECORDERS

BRIDGE SOFTWARE

Bridge software gives complete remote access to Eurotherm's recorders.

The software can be installed on any number of PCs/Laptops and can connect to multiple recorders via a local network, dial-up connection or the Internet.

Each 6000 instrument can have 10 concurrent, independent, remote users connected to it and viewing live data from the recorder.

Ease of operator use is maintained as the operation and data visible at the PC is the same as on the 6000 instruments.

Data security is maintained with the use of specific user names and passwords.

REVIEW SOFTWARE

Review is an efficient and secure library for data from which charts can be reviewed, printed and exported to other PC packages.

Archive files from a Eurotherm 6000 recorder are stored in an encrypted, binary, check summed format and *Review* uses this format to enable chart view on a PC, ensuring integrity of both historical and new data.

Review can access data from the recorder via a local network, dial-up connection, the Internet or directly from the 6000's removable media. Its Archive Management will help you to maintain growing data archives and manage files effectively.

REVIEW QUICKCHART

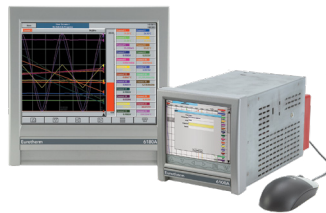
This provides a very quick and effortless way of viewing historical data.

It recreates the chart on the PC, allowing the user to add comments if they wish and re-save the chart, securing the comments.

QuickChart files can be viewed independently of the recorded process data and can be e-mailed for viewing by other users.

6100A & 6180A PAPERLESS GRAPHIC RECORDER

The 6000 Series offers unrivalled input accuracy with a 125ms total sample rate for up to 48 input channels.



Data is stored in a tamper-resistant binary format that can be used for secure, long term records of your process.

The 6000 Series is truly designed for today's networked world and can be accessed via a Local Area Network, Intranet or Internet. (Even dial-up connection).

Features / Functions

- 6100A – 5.5" 1/4 VGA, 18 channels
- 6180A – 12.1" XGA, 48 channels
- Colour touchscreen display
- USB 'plug & play'
- Up to 48 universal Inputs
- Up to 96MB non-volatile flash memory
- 125ms parallel sampling
- Front Compact Flash card drive
- Modbus RTU
- Ethernet TCP/IP
- Web server
- Ethernet/IP server

6100XIO & 6180XIO DISTRIBUTED GRAPHICAL RECORDER

Each 6000XIO instrument has an intuitive, touch screen display to enable operators to clearly view process data in varying formats.



All have onboard flash data storage capability, Ethernet communication and compact flash card drive.

Data is stored in a tamper-resistant binary format that can be used for secure, long term records of your process.

The 6000XIO is truly designed for today's networked world and can be accessed via a Local Area Network, Intranet or Internet, (even a dial-up connection).

Features / Functions

- 6100XIO – 5.5" 1/4 VGA, 18 channels
- 6180XIO – 12.1" XGA, 48 channels
- Colour touchscreen display
- Modbus master
- 96MB non-volatile Flash memory
- Ethernet TCP/IP
- Serial communications
- Compact Flash
- USB 'plug & play'
- Web server
- Ethernet/IP server

THE BEST PRODUCTS AT YOUR FINGERTIPS

ADM INSTRUMENT ENGINEERING REPRESENTS LEADING MANUFACTURERS OF THE FINEST ENGINEERED POWER SUPPLIES, POSITION TRANSDUCERS, PRESSURE SENSORS, LOAD CELLS & OTHER INDUSTRIAL & PROCESS MEASURING DEVICES IN AUSTRALIA.

OUR PRODUCT BROCHURES DETAIL OUR EXPERTISE IN POSITION SENSING, LOAD CELLS & TEST & MEASUREMENT INSTRUMENTATION.

TO REQUEST YOUR OWN COPY, PLEASE CONTACT OUR OFFICE ON, 1300 236 467

EUROTHERM RECORDERS

NANODAC

The Eurotherm Nanodac recorder/controller offers the ultimate in graphical recording, combined with PID control and setpoint programs for a box of its size.

The compact ¼ DIN panel mount unit offers four high accuracy universal inputs for secure data recording and optional PID control.

The Eurotherm Nanodac recorder/controller offers the ultimate in graphical recording, combined with PID control and setpoint programs for a box of its size.

The compact ¼ DIN panel mount unit offers four high accuracy universal inputs for secure data recording and optional PID control.



This Nanodac is enhanced by a full colour, ¼ VGA, 320 x 240 pixel display to bring a crystal clear operator interface to even the smallest of machines.

The Nanodac recorder can store your information in either an open .csv format or in a secure, check summed format to protect data integrity.

Whichever format you choose for your process, Eurotherm has the tools to help you keep this data safe; and get it to the place you need, in the format you require.

- 50MB Flash memory for data storage
- 8Hz sample and recording rate
- Secure, binary data (UHH) or open (CSV) data files
- 4 universal input channels (8 optional)
- 30 additional channels for use as mathematical functions, Modbus inputs, totalisers or counters

The Nanodac recorder has a variety of ways in which you can view your data: bar graph, trend, numeric values, and a unique alarm monitor view that changes each PV's background colour from Green to Amber to Red based on their configured alarm status.

The clear, full colour display with your data in the format you need makes it easy for operators to see what is happening in a process.

The push buttons below the display also enable simple scrolling between configured views.

Each Nanodac contains an impressive 50MB of non-volatile flash memory for data storage. All process data is continually logged to this memory and the recorder offers multiple archive strategies to ensure that your data is never lost.



Nanodac can also provide two independent control loops, and an optional Cascade control loop is available.

This control functionality utilises the advanced Eurotherm PID algorithm, adding high performance and reliability to your process.

Functionality includes one of the best auto-tune facilities available, along with overshoot inhibition (cutbacks); compensation for power fluctuations using power feedforward; linear, fan, oil and water cooling.

Heat treatment is one of the many processes that often needs to vary the setpoint of the control process over a set period of time; this is achieved by using a set-point program.

The Nanodac offers an optional Dual Programmer supporting up to 100 programs locally, each program supporting 25 segments.

The Nanodac also provides remote access to a further 100 programs that can be easily retrieved via FTP or USB memory stick.

VERSADAC SCALEABLE DATA RECORDER

The Versadac recorder delivers versatile data management functionality in a scalable form that saves installation costs, optimises ongoing operations with easy management of data, and gives peace of mind with exceptionally secure data recording and archiving strategies.



The Versadac is designed to grow with your needs – enabling you to easily add further I/O or software features in the future. Versadac recorder has a flexible range of base sizes, I/O modules and software options, so you only pay for the hardware and software you need.

It can replace multiple traditional “box” recorders, be installed closer to the point of measurement, reduce the panel space needed and, if your process changes, you can add modules and software options when you need to.

Yet it offers all of the exceptional, advanced, secure recording capability you would expect from a Eurotherm recorder. Versadac is designed from decades of in-depth knowledge and understanding of how to keep data safe.

Advanced recording and archive strategies are supported by comprehensive and secure user access options to give you complete peace of mind that valuable process data is secure and available when and where you need it.

Versadac offers sample and recording rates of up to 8Hz with high accuracy inputs. Data can also be recorded over communications channels as well as from the outputs of mathematical functions and application blocks. Any metadata and audit trail information is also securely recorded along with the process information.

EPC2000 'BLIND' PROCESS CONTROLLER AND EUROTHERM HMI GP4114 FROM PROFACE

The new Eurotherm EPC2000 is a programmable single loop temperature and process controller. It delivers fast acting precision control with easy-to-integrate Ethernet (Modbus TCP) communications. This offers high performance enhanced Eurotherm PID control, either as part of a stand-alone machine or as a control loop in a multi-zone application.



The EPC2000 is a highly cost-effective solution as it does not feature any display panels, or HMI panels that you may not need.

What you get is efficient and repeatable precision control in a convenient and easy to deploy DIN rail package, with just the features that you really need.

The Eurotherm EPC2000 gives you precise control and measurement performance with a high-speed Ethernet connection, which incorporates an integral switch for daisy chain connection to supervisors, panels or PLCs.

You will enjoy a fast PID response, with minimal overshoot and oscillation, resulting in a high degree of control accuracy of the temperature, or process.

There is a convenient multi-programmer function, with up to 20 multi-step sequences. So, the EPC2000 can be used to control relatively complex processes. Eurotherm's user function block wiring with optional maths, logic, totaliser and specialised functions enable the EPC2000 to control additional system functions beyond PID control.

STRAIGHT FORWARD PROGRAMMING

Eurotherm iTools Engineering Studio is a versatile suite of software tools to allow configuration and monitoring of Eurotherm controllers, including the EPC2000. The graphical wiring editor allows you to configure the EPC2000 using a drag and drop interface.

Eurotherm's iTools Engineering Studio can be downloaded for free using the QR code below.



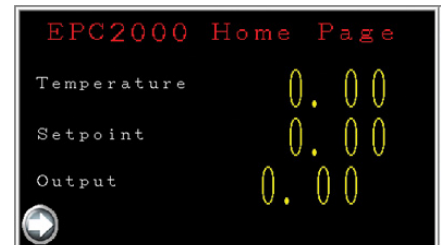
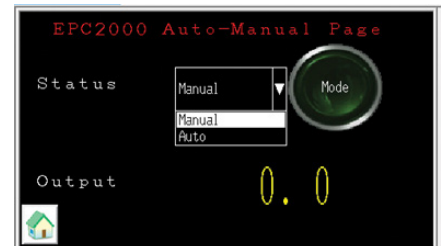
It can also be used as a simulator and training tool, giving the opportunity to test the suitability of the EPC2000 for the intended application.

PROFACE GP4114 COMPACT HMI

Should an HMI or display panel be required, then the Eurotherm ProFace GP4114 compact touch operator interface is the perfect partner to the EPC2000.



The GP4114 ProFace has a 4.3" configurable touch screen. Objects such as user text, switches & buttons, drop-down lists and keypads can be combined with images and graphics to create a highly customised interface for the application at hand.



The ProFace GP4114 is a Modbus master, which means it can read or write to multiple devices. This includes Eurotherm process controllers, such as the EPC2000, Eurotherm's EPack or EPower thyristors, and the Eurotherm Nanodac, Versadac or 6000 series data recorders, as well as many other third-party devices.

Up to 64 slave instruments can be supported via a single port using Modbus TCP.

EPC2000 KEY FEATURES

- Quick code setup with application templates
- User function block wiring including math, logic and totalizer
- Extensive range of international approvals
- Direct Ethernet RJ45 Connection certified to AchillesR CRT Level 1
- Individual setpoint ramp up and setpoint ramp down limits
- Individual output power ramp up and output power ramp down limits
- Configurable "Safe" power up and sensor break recovery strategies

EUROTHERM THYRISTORS & POWER CONTROLLERS

ESWITCH IS THE SOLUTION THAT WILL HELP YOU TO SAVE MONEY!

Mechanical contactors controlling heating elements may operate three million times per year. Often the lifetime of these contactors is just over one year. Therefore, they need to be replaced regularly during the typical life of a machine.



Eurotherm ESwitch solves this problem. The contact is purely electronic, significantly extending the lifetime. Wiring is as simple as for a mechanical contactor and the mounting is very easy: just clip it on a DIN rail!

It features a broad range of AC and DC command signals with a front face LED to display the input status to help commissioning and diagnostics.

EXTEND THE LIFE OF YOUR HEATERS

Tests performed by a well-known heater supplier have shown that heaters can last up to seven times longer when used with a solid-state contactor.

Faster on/off cycle times cause less thermal expansion and contraction and thus reduce breakage due to fatigue and thermo-mechanical stress.

By preserving the heating elements, ESwitch will allow you to:

- Reduce downtime.
- Minimise scrap.
- Improve yield and productivity.

EFIT POWER CONTROLLER

EFit provides no compromise control for resistive and infrared heating elements.



Ideal for all heating applications and fully compliant to international quality, immunity, and emissions standards, EFit delivers outstanding stable, precise control in the most demanding industrial environments, even when cabinet space is at a premium.

The perfect fit for simple heating applications.

HAVE CONFIDENCE WITH EUROTHERM'S POWER FEEDBACK

Some Industrial processes such as heat treatment require precise temperatures to comply with regulations and it is imperative that the workpiece temperature is kept within specific limits.

This can be difficult to achieve in industrial plants where the operation of large machinery can cause fluctuations in the voltage supply.

In the case of resistive heaters, a variation of 10% in the supply voltage will generate a 20% variation in the power to the load, resulting in undesirable temperature fluctuations. EFit contains built in compensation that continues to apply stable power with better than $\pm 2\%$ linearity at the boundaries of the load, even during fluctuations in the supply.

The result is a reliable, repeatable heating process and high-quality end products compliant to demanding heat treatment standards.

EPACK & EPACK LITE SCR POWER CONTROLLERS

Whether replacing an existing device or designing a new process, the EPack™ power controller has been carefully designed for fast and easy panel installation, commissioning and integration into wider systems.



End users continually need to improve operational efficiency and productivity.

EPack power controllers can deliver real savings, significantly reducing your energy costs.

EPack 3-PH

Is the ideal solution for the control of all kinds of loads. The control of each phase ensures accurate control, even if the loads are unbalanced. The currents and voltage measurements also allow for a high level of diagnostics, which can be used for alarm management as well as monitoring (impedance, energy counter, reactive power).

EPack 2-PH

Is the latest generation of power controllers designed to be a cost-effective solution for the control of 3 phase loads. The 2-leg control is particularly adapted to the control of balanced loads, directly, or through transformers. Burst firing avoids generation of harmonics and reduces the consumption of reactive power.

EPack 1-PH power controllers are designed to carry currents from 1 to 125 amps, with operating voltage between 100 and 500 Volts.

The scalability and configurability of EPack fits with the requirements of each application. A wide range of alarms can quickly identify a controller detected fault which reduces downtime.

EPOWER™ CONTROLLER

EPACK KEY FEATURES

- Nominal load current from 1 amp to 125 amps
- Voltage up to 500V
- Compact DIN Rail and bulkhead mounting
- Configurable via front panel or Eurotherm software (iTools)
- Plug and play Ethernet communications with Zero configuration networking (zeroconf)
- V2, I2 or True power control
- Controls comprehensive range of loads: resistive, infrared, transformer primary, silicon carbide
- Energy usage measurement
- Advanced load diagnostics
- Integrated dual port Ethernet switch for "daisy chained" communications
- Modbus® TCP or Ethernet IP protocols
- Defend OEM knowledge and IP (OEM Security)

EPACK LITE KEY FEATURES

- Nominal load current from 4 amp to 125 amps
- Voltage up to 500V
- Compact DIN Rail and bulkhead mounting
- 1.5" TFT display showing messages for configuration, monitoring and diagnostics
- Energy usage measurement
- Advanced load diagnostic
- Configurable via front panel
- Fast start up with 'Quick Start' or 'Clone Code' features
- V2 or I2 control or Open loop
- Controls comprehensive range of loads:
 - o Resistive
 - o Transformer primary
- Range covers Single Phase, Two Phase and Three Phase

EPOWER™ CONTROLLER

The EPower controller uses the newest technologies and innovations to manage your process and reduce your energy costs. On every level it brings you the flexibility you need to best meet your requirements now and in the future. Let us look after your power control for you and give you the peace of mind that you have the best for your process - even as it changes.

Flexibility - Advanced technologies in harmony with modularity and ease of use to deliver your power control needs.

Efficiency - World class power control with innovative features to minimise your energy costs with exceptional process performance.

Peace of mind - A power controller that will bring you return on investment and can be adapted in the future if your requirements change - one product for all solutions.

REVOLUTIONARY MODULARITY AND CONFIGURABILITY TO MEET YOUR NEEDS...

Easy ordering, configuration and maintenance through modular design. If your requirements change EPower controller can be easily adapted to meet your needs. Minimum spares holding - many options configurable through a common driver module e.g. firing mode, load, phases, control etc. Up to four power control modules provide single and multi-phase control software configurable options to bring you flexibility.

THE OPTIONS THAT YOU NEED...

A single driver module can support up to four power modules - and hence four independent control loops. Power modules are available in current ratings covering a range from 100A to 630A. The driver module itself supports options boards to give you additional flexibility in your solution:

Communications - RS485 Modbus RTU, Profibus, DeviceNet®, Modbus TCP network protocols, CCLink™, EtherNet IP™ and ProfiNet™.

Predictive Load Management (PLM)

- A powerful feature to effectively manage your power requirements across multiple machines to save on your energy costs.

Flexible I/O - The driver module supports standard I/O and up to three additional I/O boards with analogue inputs, analogue outputs, digital I/O and relay outputs.

LTC - The Load Tap changer option for single phase unit applications only, allows for managing multi-tap transformers, preventing both increased harmonics and the reduction of power factor.

Energy Counter - Available over communications and for display on user screens, customers can access up to 5 scalable counters, one per individual phases and a global energy usage counter.



Ideal for:

- Glass furnaces | Melt heat treatment
- Food processing | Multi-channel heaters
- High temperature furnaces
- Induction heating | Vacuum furnace
- Large extruders | Plastics

Control Type:

- Single phase | 2 x single phase
- 3 x single phase | 4 x single phase
- Two phase | 2 x two phase
- True three phase

Firing Modes:

- Phase angle | Half cycle | Burst firing
- Fix modulation period | Logic mode

Load Type:

- Standard Resistive | Complex Resistive
- Inductive e.g. Transformer
- Short Wave Infrared

Load Configuration:

- Single phase | Star | Delta
- Star with neutral | Open Delta

Feedback:

- V2 | I2 | True power | RMS load voltage
- RMS load current | Open loop

OUR SUPPLIERS



MEAN WELL



POWER SOURCE



TRANSDUCER SENSORS AUSTRALIA



THERMO FISHER SCIENTIFIC



PCA ENCODERS



ADEL SYSTEM



POSITAL FRABA



ESI



UNIMEASURE



HYTRONIK



MOTRONA



PULSOTRONIC



EUROTHERM



BURSTER



EYC



LUTRON



MONITRAN



PT GLOBAL



RDP



RICE LAKE



SARAD



SEIKA



CURIOTEC



MIDORI



ASHLAND

ADM SYSTEMS GROUP

Head Office:
26 Garden Blvd, Dingley Village, VIC 3172

Western Australia:
Unit 1 / 12 Conquest Way, Wangara WA 6065

New South Wales: (Encoders Only)
Unit 3 No.95 Hunter Street, Hornsby, NSW 2077

Queensland:
1/40 Leonard Crescent, Brendale, QLD 4500

T +61 1300 236 467
F +61 3 9551 6977
E sales@admtech.com.au
W www.admtech.com.au

Contact us for a copy of our other product brochures.

