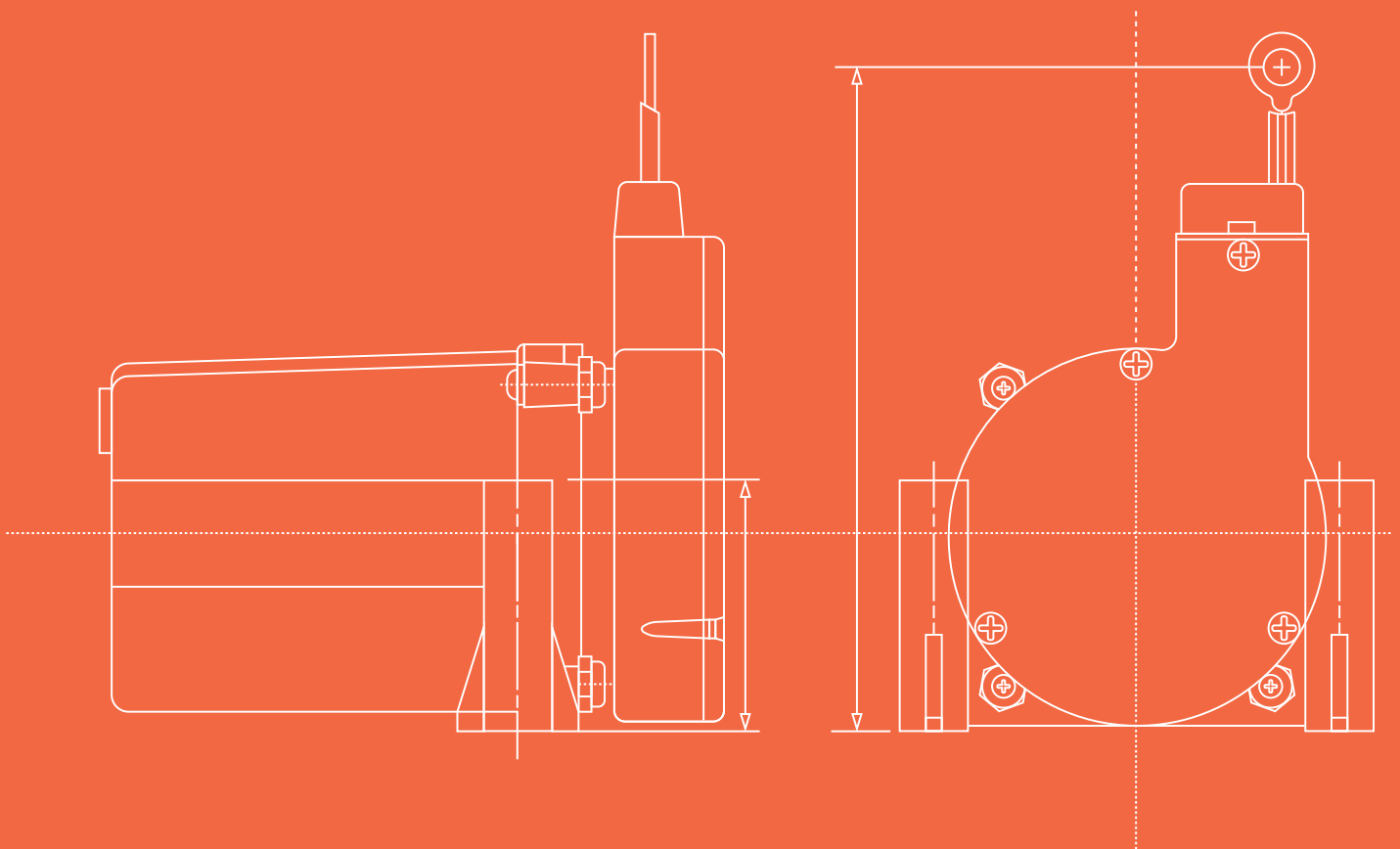


SENSE & MEASUREMENT



ABOUT ADM

FOR OVER 30 YEARS ADM INSTRUMENT ENGINEERING HAS BUILT A SOLID REPUTATION ACROSS AUSTRALIA AS A RELIABLE SUPPLIER OF POWER, TEST EQUIPMENT, INDUSTRIAL SENSORS & TRANSDUCERS

We are a proud Australian owned ISO9001 company, with a strong tradition in providing design solutions, expert advice and excellent customer service.

ADM offers an extensive range of industrial sensors and transducers, including encoders and pressure sensors for OEMs and machine builders, as well as a wide range of test and measurement instrumentation, industrial power supplies, process controllers, and thyristors. This means we can provide a solution to almost any application.

INDEX

03 PRESSURE TRANSDUCERS

04 ROTARY ENCODERS

05 LINEAR POSITION

06 ANGLE, INCLINATION, & TORQUE

07 LOAD CELLS

08 VIBRATION - ACCELERATION & VELOCITY SENSORS

09 DISPLAYS & TRANSMITTERS

10 SOLID STATE RELAYS & THYRISTORS

11 UPS & POWER SUPPLIES

12 OUR SUPPLIERS

PRESSURE TRANSDUCERS

GENERAL PURPOSE PRESSURE TRANSDUCER



- Pressure ranges: 0-500 mbar; to 0-1500 bar.
- Silicon-on-Sapphire technology.
- Accuracy: $\leq \pm 0.25\%$ of span BFSL.
- Output: mV/V or 4-20 mA.
- Wetted parts: all titanium.
- Options: ATEX/IECEx.

USB COMMUNICATION



- Pressure Ranges: -1-2.5 bar to 0-5000 bar.
- Silicon-on-Sapphire technology.
- Accuracy: $\leq \pm 0.15\%$ of span BFSL.
- Output of signal: USB-interface power supply and data transfer via USB.
- Wetted parts: all titanium.
- Free software.

DIFFERENTIAL PRESSURE



- Pressure ranges: 0 - 5 mbar up to 0 - 200 bar.
- Accuracy: $< \pm 0.3\%$ of span BFSL.
- Output signal: 4-20 mA (other options on request).
- Wetted parts: suitable for liquids or gases.

SUBMERSIBLE DEPTH / LEVEL



- Pressure ranges: 0-1 mWG up to 0 - 500 mG.
- Accuracy: $\leq \pm 0.3\%$ of span BFSL.
- Output Signal: 4-20 mA etc.
- Options: IECEx approved.

PRESSURE SWITCHES



- Adjustable or factory set pressure switches.
- IP65/IP67 rated.
- Overpressure up to 25 bar.
- Stainless steel and alloy tool steel models available.

WIRELESS PRESSURE TRANSDUCER

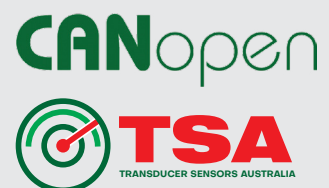


- Transmitter & receiver module.
- Battery power option.
- Up to 500 meters range.

FEATURED PRODUCT

OEM PRESSURE TRANSDUCERS CANOPEN PRESSURE TRANSDUCERS

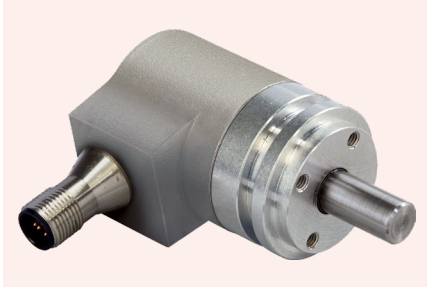
- Cost effective, high volumes.
- Range 1.600 bar.
- 4-20mA, M12 connection.
- Process 1/4" BSP.
- Supports CAN 2.0 protocol.
- Cost effective.
- M12 connection.
- Process fitting 1/4" BSP.



Competitively priced range of OEM pressure sensors for volume manufacturers.

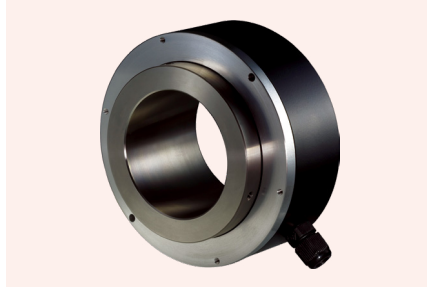
ROTARY ENCODERS

INCREMENTAL MAGNETIC



- Programmable, with solid or hollow shaft sizes from 6mm up to 150mm volumes.

OPTICAL THROUGH HOLLOW SHAFT



- High accuracy, easy mounting onto motor shaft or roller.
- Option for IP67 ruggedized.

ENCODER ACCESSORIES



- Couplings, wheels, mounting brackets, torsion arms, cable and connectors in stock.

ABSOLUTE ENCODERS

EtherNet/IP™

EtherCAT®

PROFI
NET®



4-20mA

CANopen®

Modbus

SSI
SYNCHRONOUS SERIAL INTERFACE

SAE J1939

HEAVY DUTY ENCODERS



- Stainless steel.
- IP66/IP67.



ENCODERMATCH
POSITAL

EQUIVALENT ENCODERS

- DISTRIBUTORS FOR ONE OF THE LARGEST RANGE MANUFACTURERS.
- LOCAL FACILITY HAS ASSEMBLED & CUSTOMISED ENCODERS SINCE 1968.

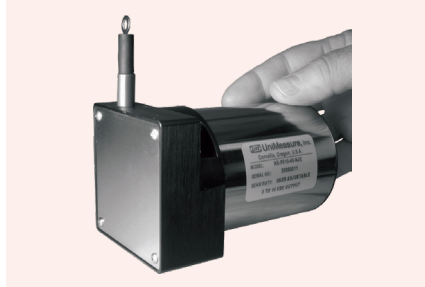
LINEAR POSITION

DRAW WIRE TRANSDUCERS



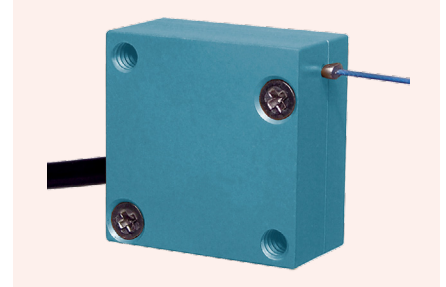
- UniMeasure JX Series transducers.
- Linear position sensors.
- Draw wire transducer (string pot).
- 50 - 2000mm measurement.
- Voltage and current outputs.
- Low-cost for use in light to moderate duty applications in wet or dry environments.

HEAVY DUTY DRAW WIRE TRANSDUCERS



- UniMeasure HX Series transducers.
- Up to 50m measurement.
- Voltage and current outputs.
- Heavy duty configuration for adverse environmental conditions.
- Optional IP68 SS housing.
- 4-20mA output option.

MINIATURE DRAW WIRE TRANSDUCERS



- UniMeasure ZX miniature string potentiometer.
- The ZX models offer a 1.5" (38mm) measurement range in an extremely compact package.
- Wide operating temperature range, long cycle life and tiny footprint.

LVDT DISPLACEMENT TRANSDUCERS



- 8 - 940mm lengths.
- High accuracy and cycle life.
- Infinite resolution.
- Optional 4- 20mA outputs.
- Submersible options available.

DRAW WIRE TRANSDUCERS WITH INDUSTRIAL COMMS



- 10 - 500mm lengths.
- High accuracy and cycle life.
- Infinite resolution.
- Available with or without return spring.
- Variety of signal outputs.

LINEAR POTENTIOMETERS



- Fieldbus comms such as CANopen.
- 4-20mA, Incremental etc.
- Rugged enclosure aluminium, steel, plastic.
- Option - Draw wire mechanism only.

FEATURED PRODUCT

FX-HM ANALOG POSITION TRANSDUCER

- **Compact Design.**
- **50-375mm Travel.**
- **0-10V output.**
- **IP56 (optional IP65).**
- **Mounting bracket accessories.**



ANGLE, INCLINATION, & TORQUE

CONTACTLESS ROTATION SENSORS



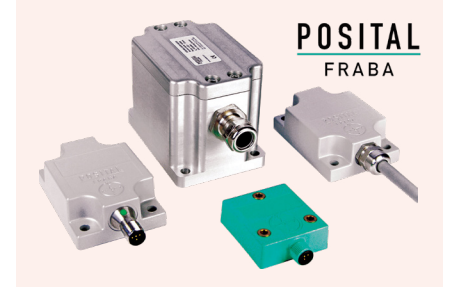
- 1/4 rotation to 200 rotation sensing.
- IP ratings available up to IP69K.
- Infinite resolution with +/- 0.02% full scale linearity.

ANGLE SENSORS



- Conductive plastic angle sensors.
- High accuracy angle sensors.
- Continuous 360° rotation.
- Compact and robust.

INCLINOMETERS



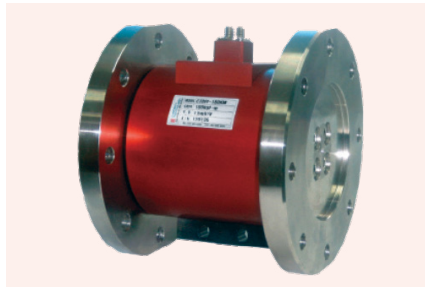
- Single or two axis tilt sensors.
- +/- 5, 10, 20, 30, 45, 80 and 360° sensing.
- Hall effect, 4-20mA. DCV or RS232 outputs.
- Industrial communication protocols.

SHAFT STYLE ROTARY TORQUE



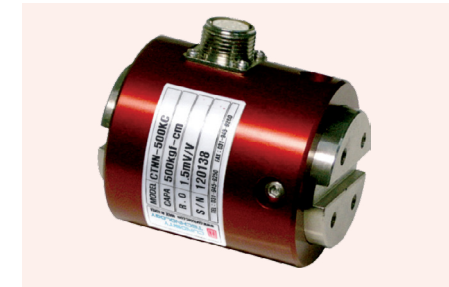
- Measures RPM & torque of continuous rotating objects.
- 1 - 1000 kg m.
- Output: 1.5 mV/V.

FLANGE STYLE ROTARY TORQUE



- Measures torque of continuous rotating objects.
- Simple flange installation.
- 5 - 50,000 kg m.
- Output: 1.5 mV/V.

REACTION TORQUE SENSOR

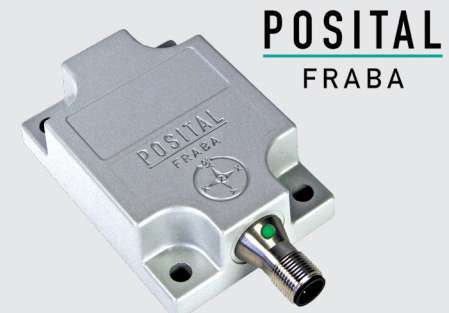


- Reaction measurements eliminate speed limitations.
- Minimal friction errors.
- 50 - 2000kg cm.

FEATURED PRODUCT

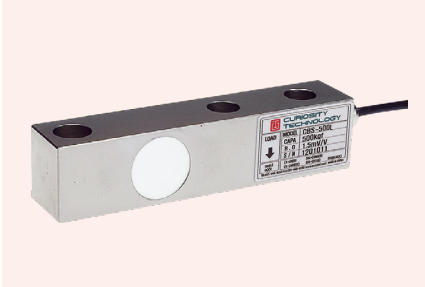
DYNAMIC RUGGED INCLINOMETERS

- Well protected up to IP69K.
- Rugged and compact design.
- Measurement range $\pm 80^\circ$ (Dual Axis) or 360° (Single Axis).
- Compensation of external accelerations
- Accurate measurement during dynamic movements.
- Interfaces: CANopen, Analog Current, Analog Voltage, RS232, SSI, J1939, DeviceNet.



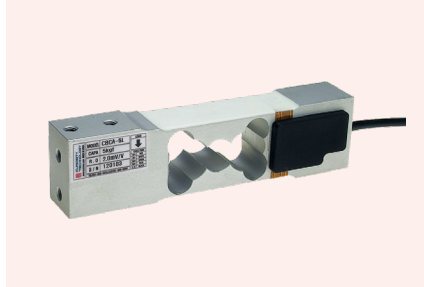
LOAD CELLS

SHEAR BEAM



- 150kg to 10 tonnes.
- 2-3 mV/V output.
- Stainless steel or nickel steel.
- Low cost.

SINGLE POINT



- 300g to 600kg.
- 2-3 mV/V output.
- Stainless steel or nickel steel.
- Fully environmentally sealed.

S-TYPE



- 10kg to 5 tonnes.
- Tension and compression.
- 2-3 mV/V output.
- Fully environmentally sealed.

BENDING BEAM



- 20kg to 500kg.
- Tension and compression.
- Stainless steel.
- High accuracy.

SHACKLE TYPE



- 5T to 400T.
- 0.1% repeatability.
- Hoisting applications.
- Stainless steel.

MINIATURE



- 1kg to 2 tonnes.
- Miniature dimensions.
- Tension and compression.
- Perfect for limited space.
- Submersible.

FEATURED PRODUCT

Authorized Solutions Provider
Recording & Data Management

Eurotherm.
by Schneider Electric

- Eurotherm strain gauge indicator and controller.
- Power supply: 24VAC/DC, or 85 to 264VAC.
- RS232 or RS485 Modbus RTU communications.
- Optional 4-20mA transmission.



VIBRATION - ACCELERATION & VELOCITY SENSORS

AC OUTPUT SENSORS



- Constant current drive, output in mV/g.
- Use with on-line vibration analysers and hand held data collectors.
- Top or side entry.
- Range of sensitivities.
- Acceleration or velocity.
- IECEX approved.

DC OUTPUT SENSORS



- 4-20 mA output for connection to PLCs or other monitoring systems.
- Integral cable or electrical connector.
- Range of sensitivities.
- Acceleration or velocity.
- IECEX approved.

TRI-AXIAL SENSORS



- Triaxial acceleration measurements.
- Sensitivity 10mV/g.
- Frequency response 1 Hz to 10 kHz.

SUBMERSIBLE SENSORS



- Acceleration and velocity sensors.
- Fully submersible.
- Available with IECEX approvals.
- AC 100 mV/g outputs.
- DC 4-20mA output.
- Wide frequency response.

MULTI-OUTPUT SENSORS



- Two or more outputs from a single sensor.
- Temperature sensor provides mV/°C signal along with AC or DC output.
- AC output for analysis together with DC output for monitoring and protection.

HAND HELD VIBRATION METERS



- Single and multi-channel vibration monitors.
- Available with internal removable SD card data logging.
- AC or DC powered.

FEATURED PRODUCT

LUTRON VB-8201HA HAND HELD VIBRATION METER

Unsure of what vibration range you need to measure?

Cost effective hand-held meter can save time and money. On the spot inspection tool for maintenance engineers. Range 200mm/s includes magnetic base probe.



DISPLAYS & TRANSMITTERS

DISPLAYS / TRANSMITTERS



- Panel mount.
- Simple indication or complex control.
- Tri colour backlit LCD.
- AC or DC powered.

INTELLIGENT CONTROLLER / CONVERTER SYSTEM



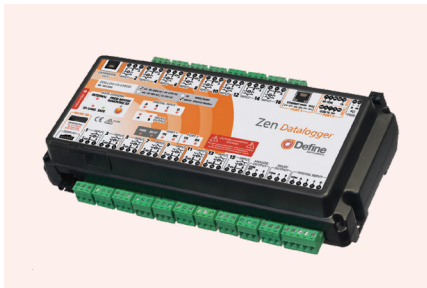
- Din-rail or bulkhead mount.
- PID control or Advanced Alarm/Converter.
- EPC2000 offers Modbus TCP or RTU Communications.
- ProFace Touch Screen supports 64 slave nodes.

RS232 TO WI-FI CONVERTERS



- Splitters.
- Converters.
- Extenders.
- Dividers.
- Simulators.

DATALOGGERS



- Enables sophisticated monitoring, control and data logging.
- 16 isolated input channels.
- Ethernet Modbus.
- 2 isolated auto-detecting serial ports for RS232, RS485, RS422 or Ethernet connections.

DISPLAY / DATA LOGGERS



- Data logger and display for up to three 4-20mA inputs or three 0-10V inputs.
- Saves the measuring data into a removable SD memory card for later analysis using Excel.
- Display three parameters on its LCD.

WIRELESS COMMUNICATION



- Preconfigured motion application controllers.
- Safety monitors and controllers up to SIL3.

FEATURED PRODUCT

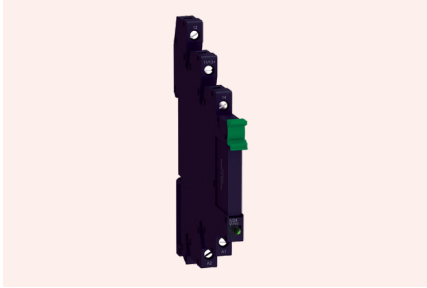
EUROTHERM NANODAC 6 CHANNEL GRAPHIC RECORDER / CONTROLLER

- 96 x 96mm panel cut out.
- Ethernet port.
- Web server.
- Reporting software.
- Tamper proof data.



SOLID STATE RELAYS & THYRISTORS

SOLID STATE RELAYS



- 0.1A, 3A, 6A, 12A.
- DIN RAIL mount.
- AC or DC output.
- AC & DC control inputs.

SOLID STATE CONTACTORS



- 25A, 30A, 45A, 55A.
- DIN RAIL mount.
- Assembled on heatsink.
- 1 or 3 phase.

THYRISTORS



- AC power control.
- 4-20mA or Ethernet.
- Ramp up/down.
- Diagnostic feedback.
- ENERGY SAVING.

EPACK THYRISTOR



- 3 Phase power control.
- Individual phase control/balance.
- Suitable for many loads.
- Diagnostic feedback.
- ENERGY SAVING.

EPOWER THYRISTOR



- Power Control.
- Predictive Load management.
- 4-20mA or Ethernet.
- Diagnostic and Counter feedback.
- ENERGY SAVING.

Authorized
Solutions Provider

Recording & Data Management

Eurotherm™
by Schneider Electric

ADM Instrument Engineering are fully recognised by Eurotherm and Schneider Electric for the service that our clients are offered, such as technical support and local stock.

FEATURED PRODUCT

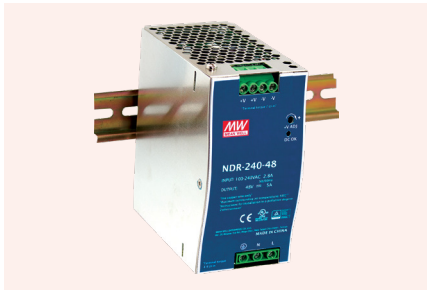
LUTRON EMF-839 3 AXIS RF ELECTROMAGNETIC FIELD METER

- EMF tester with wide frequency measurement ranges: 100 KHz to 3 GHz.
- Wide sampling time adjustment range from one second to 8 hours 59 minutes 59 seconds.
- An alarm can be set to warn if the measuring antenna is too near strong radiation sources. A buzzer will sound to alert the user.
- Supplied complete with memory card, metal carry case and two probes:
 - EPL-04L (Low frequency probe, 100 KHz to MHz).
 - EP-03H (High frequency probe, 100 MHz to 3 GHz).



UPS & POWER SUPPLIES

DIN RAIL



- Universal AC input / full range.
- 10W – 960W models.
- 5, 12, 24 and 48V with adjustment.
- Current sharing options.
- Single, two and three phase.
- Wide input models.
- Up to 3 years warranty.

ALL-IN-ONE DIN RAIL UPS



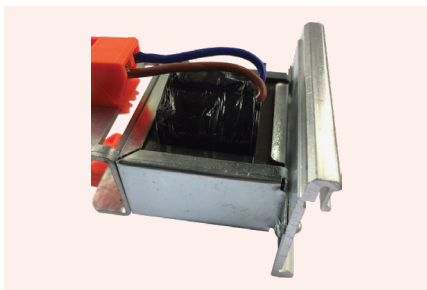
- Combined PSU, charger and UPS controller.
- Networkable for remote monitoring.
- Built-in battery test and verification function.
- Remote display available.
- 12V, 24V and 48V options.
- Supports multiple battery chemistries.

HARSH ENVIRONMENT



- Vibration resistant.
- Resistant to dust ingress.
- Fanless design.
- High reliability.
- Adjustable output voltage and current.
- Up to 600 WATTS.
- 6 years warranty.

AC-AC TRANSFORMERS



- DIN rail mount available. (Up to 100VA).
- 240V and 415V input options.
- 12V - 240V output options.
- 20VA - 800VA.
- Terminal blocks for easy connection.

DC-DC CONVERTERS



- 15W - 1000W.
- 2:1 or 4:1 input range.
- Adjustable DC output.
- Up to 2000VAC I/O isolation.
- 100% full load burn-in test.
- 2 to 3 year warranty.
- DIN Rail models stocked.

RACK MOUNT



- Up to 25.6kw.
- Programmable current / voltage.
- Remote monitoring and alarms.
- Can be connected in parallel.
- Rack mount battery chargers.

FEATURED PRODUCT

ADEL SYSTEM ALL IN ONE UPS

Perfect for locations that are difficult to access, and mission critical applications. Adel System's all in one UPS features an integrated battery test and verification function, so that you don't have to send engineers to remote locations just to check up on the health of your batteries.

Support for several different battery chemistries and high surge current capability. 12V, 24V, and 48V output voltages are offered, and high-power models are available. Many models can be networked and offer remote monitoring and control capability.



OUR SUPPLIERS



MEAN WELL

Authorized
Solution Provider

Eurotherm
by Schneider Electric

EUROTHERM

Thermo
SCIENTIFIC

THERMO FISHER
SCIENTIFIC

POSITAL
FRABA

POSITAL
FRABA



TRANSDUCER
SENSORS
AUSTRALIA



POWER
SOURCE



ESI



UNIMEASURE



MIDORI



MOTRONA



GES GROUP



BURSTER



EYC



LUTRON



MONITRAN



PT GLOBAL



RDP



RICE LAKE



SARAD

seika.de®

SEIKA



CURIOTEC

HYTRONIK

HYTRONIK

ASHLAND

ASHLAND

ADM SYSTEMS GROUP

Head Office:

26 Garden Blvd, Dingley Village, VIC 3172

Western Australia:

Unit 1 / 12 Conquest Way, Wangara WA 6065

New South Wales: (Encoders Only)

Unit 3 No.95 Hunter Street, Hornsby, NSW 2077

Queensland:

1/40 Leonard Crescent, Brendale, QLD 4500

T +61 1300 236 467

F +61 3 9551 6977

E sales@admtech.com.au

W www.admtech.com.au



Contact us for a copy of our other product brochures.